

Circular Blue

music by Hitomi Nishiyama
lyric by Jesse Forest

Intro.

Dm7

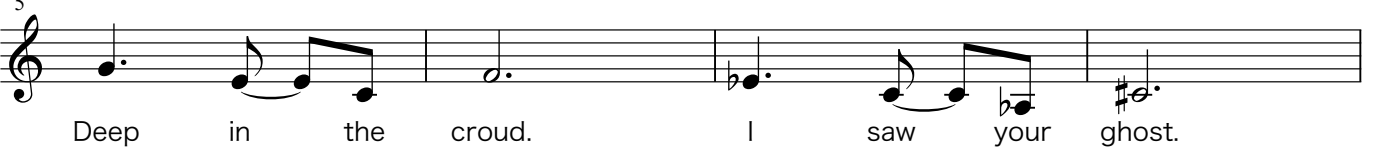
D⁺¹¹bMaj7

B^bm7

F[#]m7



A Dm7 D⁺¹¹bMaj7 B^bm7 F[#]m7



Deep in the crowd. I saw your ghost.

A G B⁺⁵bMaj7 G B



Life could be more than just pale, empty light.

C^{Maj7} A^{m7} A^bMaj7 F^{m7} G⁺⁵bMaj7



Falling through circles winding empty dreams.

B C⁻⁵m7 F7 F⁻⁵#m7 B7



In that cafe. Street lights that flickered.

A⁻⁵#m7 D#7 G#m7 E^mΔ



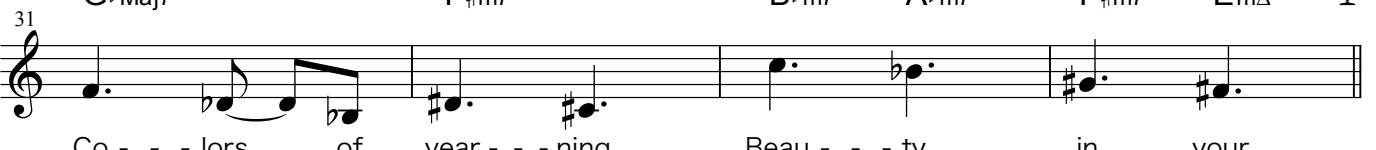
When you smiled the moon turned a deeper blue.

F7alt B^bm7 A^bm7 G^{m11}



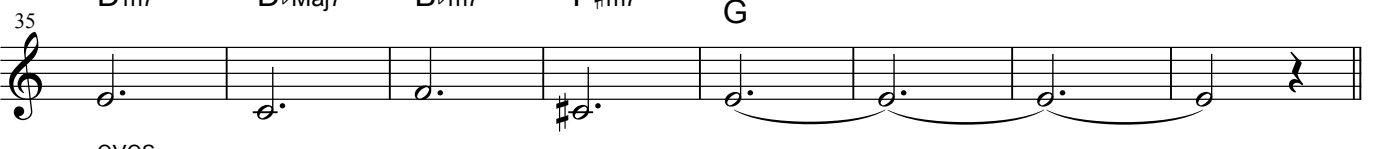
I could have talked 'till dawn.

C G^bMaj7 F[#]m7 B^bm7 A^bm7 F[#]m7 E^mΔ



Colors of yearning. Beauty in your

Dm7 D⁺¹¹bMaj7 B^bm7 F[#]m7 A G



eyes.

D 43 $B\flat^{+5}Maj7$ $\frac{G}{B}$ $C^{+5}Maj7$ $A^{+5}m7$ $A\flat^{+5}Maj7$ $F^{+5}m7$ $G\flat^{+5}Maj7$

51 $C^{+5}m7$ $F^{+5}7$ $F\sharp^{+5}m7$ $B^{+5}7$ $A\sharp^{+5}m7$ $D\sharp^{+5}7$

57 $G\sharp^{+5}m7$ $E^{+5}m\Delta$ $F^{+5}7alt$ $B\flat^{+5}m7$ $A\flat^{+5}m7$ $G^{+5}m7$

63 $G\flat^{+5}Maj7$ $G\flat^{+5}m$ $B\flat^{+5}m7$ $A\flat^{+5}m7$ $F\sharp^{+5}m7$ $E^{+5}m\Delta$

69 $D^{+5}m7$ $D\flat^{+11}Maj7$ $B\flat^{+5}m7$ $F\sharp^{+5}m7$

77 $A^{+5}7$ G^{+5}

D.S.

Ending

81 $D^{+5}m7$ $D\flat^{+11}Maj7$ $B\flat^{+5}m7$ $F\sharp^{+5}m7$ $C\sharp^{+5}m7$

eyes. _____ X times repeat Fade Out